

PC&C General Ledger Interfaces

Using the GL Interfaces

Jim Simunek, CPIM

Jim.simunek@cistech.net

Overview

- Manufacturing Order Files
- Material Transactions (IM) – discussed in the IM GL Interface session
- Labor Transactions
- Outside Operations
- WIP Scrap
- Variances/Variance Analysis
- GL Rules/wildcard rules

Manufacturing Order Files

- When a Manufacturing Order is added, the following files are created:
 - MOMAST – summary record holds the Item ordered, quantity ordered, start/due dates, etc.
 - MODATA – component records; copy of the BOM. Updated when material transactions (IM) are entered
 - MOROUT – operation records; copy of the routing. Updated when labor is reported or earned
 - MOMISC – miscellaneous charge records; if entered with cost information will always add to the variance

MO Status Codes

- 10 – *Released:* – BOM & Routing have been copied to MODATA and MOROUT files
- 40 – *Started:* Either a material or labor transaction has been entered
- 45 – *Material Complete:* No further IM transactions allowed
- 50 – *Labor Complete:* No further labor transactions allowed
- 55 – *Both Material & Labor Complete*

File Names

- Rules:
 - PCCACC
- Priorities:
 - PCCSEQ

Labor Reporting

- Labor can be entered manually through PC&C Shop Floor Reporting
- Labor can be passed via PM&C (Production Monitoring & Control) with bar-coded Operation On/Off transactions
- With Paperless/MES, touch screens on the shop floor can be used to report Operation On/Off transactions

Labor Valuation

- Tailoring Question C003 “Order Costing Method” determines whether labor is valued at payroll pay rate for employee (XA Payroll required) or Facility Standard
- Labor Hours reported to each operation are extended by Rate

Overhead

- Overhead is determined by the Facility
- Each facility has its own overhead “code” which determines what absorbs overhead for that facility
- Overhead can be calculated by Labor time (set-up plus run) or by Machine Time
- Overhead can be entered as a rate or a percentage

Facility

(R7) Change Facility - 100, ASSY

File Display Maintain Customize Navigation Help

Default [Icons]

ASSY ASSEMBLY Site: 100 PC Production

Standard machine rate	22.50
Standard run labor rate	14.00
Standard setup labor rate	14.00
Standard overhead rate/percent	350
Standard overhead code	Machine + (Labor x L/O %)

Facility (Green Screen)

ESERVER
 File Edit View Communication Actions Window Help

DATE 5/14/06 PRODUCTION FACILITY INQUIRY AMVD61 AM

FACILITY ID	1000	FACILITY TYPE	WORK CENTER
DESCRIPTION	WELD		
DEPARTMENT		PN FAC ACTG CLS	QUEUE TIME-DAYS .00
FOREMAN		PRIME LOAD CODE	0 AVG QUEUE TIME .00
LOCATION		TRACKING SIGNAL	.00 QUEUE MAD .00
STD EFFICIENCY	1.00	AVG STD OUTPUT	.00 MACH RESOURCE NO.
AVG EFFICIENCY	1.00	AVG ACTL OUTPUT	.00 LABOR RESOURCE NO.
EXTRACT MACH BRKS	0	REPORTING METHOD	0 CLOCKING WINDOW :00

	MACHINE RATE	RUN LABOR RATE	SETUP LABOR RATE	OVERHEAD RATE/PERCENT	OVERHEAD CODE
CURRENT	50.000	25.000	25.000	125.000	B
STANDARD	50.000	25.000	25.000	125.000	B

	-----LENGTH-----		----CAPACITY----		DIRECT USAGES	13
	DESIRED	MAXIMUM	DESIRED	MAXIMUM		
SHIFT 1	8.0	8.0	7.0	8.0	CALENDAR NAME	
SHIFT 2	8.0	8.0	7.0	8.0	POST TO OLDEST SCHED	
SHIFT 3	8.0	8.0	7.0	8.0	POST TO FUTURE SCHED	
					FACILITY STOCK LOC	
					F02 VARIABLE CAPACITY	
					F24 END OF JOB	

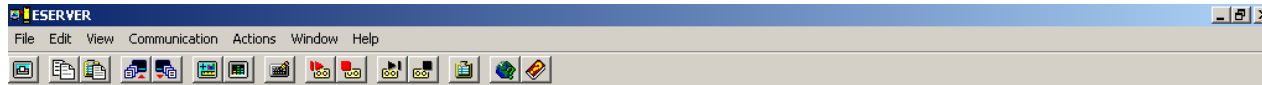
03/017

1902 - Session successfully started

Start 2 Microsoft Outlook Power Point Present... Microsoft PowerPoint... ESERVER 6 javaw 5:46 PM

Standard Rates will be used to Value labor and overhead

GL Transactions



AMVLI01 Maintain Interface Control File

Position to transaction type ____

Type option; then press Enter.

2=Change

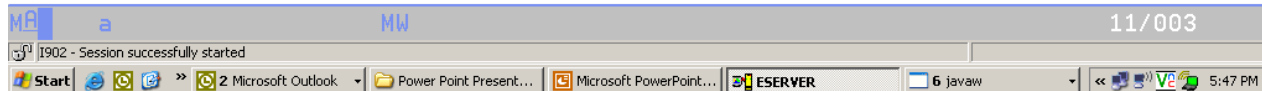
Option	Type	Description	Interface Code	More: + Application Indicator
-	LMAC	Machine cost	1	C
-	LOHD	Overhead cost	1	C
-	LRAP	Outside operations cost	1	C
-	LRPA	Run labor from Payroll	1	C
-	LRSA	Run labor from Shop Activity	1	C
-	LR**	Run Labor - all	2	C
-	LSPA	Setup labor from Payroll	1	C
-	LSSA	Setup labor from Shop Activity	1	C
-	LS**	Labor setup - all	2	C
-	L***	Labor - all	2	C

F1=Help
F8=Forward

F3=Exit

F5=Refresh

F7=Backward



Transaction Creation

- Every time labor is reported to an operation, the following transactions will be created in the PCCTXN file:
 - Run Labor: LRSA from Shop Activity
 - Set-up Labor: LSSA from Shop Activity
 - *Charge Account: WIP*
 - *Offset Account: Labor Earned/Absorbed*

Overhead

- Each time labor or machine time is reported, an overhead transaction is also created
 - Overhead: LOHD Overhead Cost
 - *Charge*: WIP
 - *Offset*: Overhead Absorbed/Earned

Machine Costs

- If the facility has a Machine Standard Rate and Machine time is reported to the MO, XA will create a LMAC transaction
- *Charge:* WIP
- *Offset:* Machine Cost Applied or Earned Overhead

Labor & Overhead

- Questions??????

Outside Operations

- Time Basis Code “C” in a routing operation flags an operation as being performed at the vendor
- Standard Cost for the Outside Operation is stored in the routing operation record
- Create an Item Master/Revision record to buy the Service (no Item Warehouse/Balance record is required)
- PO for the service can be created automatically when MO is released
- Default PO Price is determined by PO Control file
- Difference between PO Price/Invoice and Standard Cost will be a variance

Outside Operation Costs

```

ESERVER
File Edit View Communication Actions Window Help
DATE 5/14/06 CHANGE OUTSIDE OPERATION DETAILS AMCCOD1D R7
  
```

TYPE INFORMATION, PRESS ENTER.

PAGE 1 OF 2

```

SITE ID . . . . . XPS
VENDOR NUMBER . . . . . XVEN3
WAREHOUSE ID . . . . . XWH
FINISHED ITEM NUMBER . . . . . X661
ITEM REVISION . . . . .
OPERATION SEQUENCE # . . . . . 0010
ROUTING IDENTIFIER . . . . . XVEN3
ROUTING VERSION . . . . . 1
SERVICE ITEM NUMBER . . . . . X660
QTY/COST UPDATE . . . . . 2 (0 = Qty/Cost Update at Invoice)
                                     (1 = Qty/Cost Update at RP)
                                     (2 = Qty at RP/Cost at Invoice)
PREFERRED VENDOR . . . . . 1 (0=No, 1=Yes)
P.O. CREATE AT M.O. RELEASE . . . 1 (0=No, 1=Yes)
RELEASE TIME FENCE . . . . . 000 (# of days in Time Fence)
LEAD TIME PURCHASE . . . . . .0 (# of days to Dock)
LEAD TIME ADJUSTMENT . . . . . 00 (# of days Dock to Production)
  
```

Outside Operation file
Determines when MO costs
are updated (at PO Receipt or
Invoice)

F5=REFRESH F8=FORWARD F12=RETURN

```

MA b MW 13/037
I902 - Session successfully started
Start [Inbox - M... 2 Windo... PC&C Ge... ESERVER 8 javaw Adobe Re... Microsoft ... ESERVER 7:18 PM
  
```



PO Create

- Either creating the MO or reporting quantity complete at the previous operation will cause a PO to be created
- PO Price is determined by Purchasing Control file
- PO may be a single delivery PO or a release on a Blanket PO

LRAP Transaction

- Outside Operation file controls when the MO cost & Operation Quantity complete are updated
- the LRAP transaction is created when the cost in the MOROUT file is updated
- *Charge:* WIP
- *Offset:* Outside Process (AP Clearing)

AM Financials – AP Invoice Entry

ESERVER
File Edit View Communication Actions Window Help

Batch 039 Company 1 Invoice & Credit Detail Enter AMV162 AM
Batch date 5/15/06

Invoice no.	Seg	Vendor	Voucher	Type
0987	1	Outside Process	28	Invoice

Item no.	X660				
Description					
Landed cost code		Detail split <Y/N>	N	Grs. amt	100
Subj disc	.00	Discount %	.00	Dis	.00
Exp acct		Charge type	0	W	1
Quantity	.000	Unit of measure			
Order number	M/P 012510	Misc chg			
Charge operation	0020				

Order & Operation Nos. →

Charge Type O

F1=Batch summary F3=New invoice F6=Detail summary
 F13=Add tax F14=Add special chg F15=Add freight
 F19=Return to header F24=Display status Use Roll Up/Dn

MP b MW 17/025
 I902 - Session successfully started
 Start Microsoft PowerPoint - [...] Inbox - Microsoft Outlook ESERVER 8:15 PM

IFM Financials – Invoice Entry

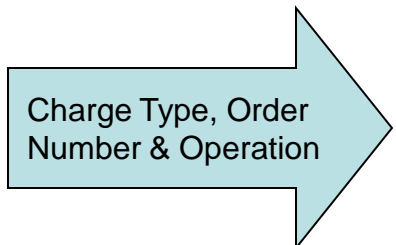
ERP for iSeries eWorkPlace Session A - [Charge Line - Page 2 of 2]

File Edit Functions View Options Help

Financial division: 01 Hi-Tech Corporation - USA One
Transaction/line: API 1 Narrative available
Purchase order: P000904
Debit memo number:
Apportionment:
 Prorate
Allow settlement discount:
Freight/Special charge:
Charge type: 0
Warehouse: FDM FRUEHAUF DE MEXICO MAIN WH
Order number M/P: MWEB200
Charge operation: 0050
Miscellaneous charge no:
Tax transaction type:
 Subject to withholding
Subject to withholding ID:

OK Create Previous line Review Text Exit Cancel More...

start 2 V D... Pr... S... S... 3 P 2 P E... 100% 4:57 PM



Outside Operations

- Questions????

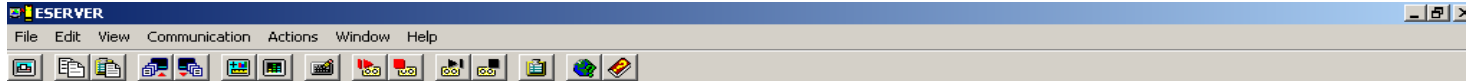
Scrap

- Scrap is reported at individual operations
- Reported scrap will lower the quantity to be produced
- Scrap labor & overhead costs will be pro-rated through the operation where the scrap was reported
- Material: if the bill specifies operation where first used, the material cost will be pro-rated through the operation

SCRCP Transactions

- When scrap is reported, XA will create a SCRCP transaction with the pro-rated value of the scrapped item
- *Charge:* Scrap
- *Offset:* WIP
- WIP Value report will show the value of scrap in WIP as a separate dollar value

WIP Reconciliation



Display Spooled File

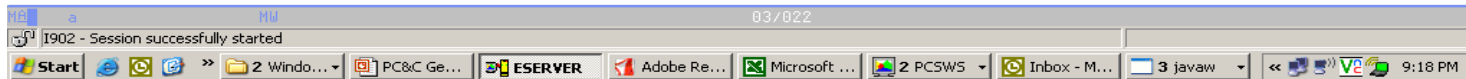
File : AMVQ2RP Page/Line 1/3
 Control : Columns 1 - 130
 Find :

*.....1.....2.....3.....4.....5.....6.....7.....8.....9.....0.....1.....2.....3
 CISTECH NO. 01 WORK IN PROCESS TOTALS SHEET DATE 5/14/06 TIME 21.16.52 PAGE 1 AMVQ
 OPEN MANUFACTURING ORDERS INCLUDED OPER
 SITE XPS

	ORDER COSTS	
SETUP	.00	
LABOR	.00	
OVERHEAD	.00	
MATERIAL & PURCHASE	300.00	
MISCELLANEOUS	.00	
TOTAL	300.00	VALUATION OF SCRAP
MINUS RECEIPTS	256.93	INCLUDED IN TOTAL
		ACTUAL COSTS
WORK IN PROCESS	43.07	.00

F3=Exit F12=Cancel F19=Left F20=Right F24=More keys

Bottom



Scrap

- Questions????

Variations

- XA will calculate a total variance as follows:
 - “Actual Cost” = Material + Machine + Set up labor + Run labor + OH
 - Receipt value = RM transaction quantity x Unit Cost Default
 - Order Variance = “Actual Cost” – Receipt Value

Variance Transactions

ESERVER

File Edit View Communication Actions Window Help

AMVLI01 Maintain Interface Control File

Position to transaction type ____

Type option; then press Enter.
2=Change

Option	Type	Description	Interface Code	More: - + Application Indicator
█	VCLO	Variances - order closeout	1	C
-	VEAC	Miscellaneous charge cost variance	1	C
-	VE**	Miscellaneous charge variances	2	C
-	VMCS	Material cost variance	1	C
-	VMUS	Material usage variance	1	C
-	VM**	Material variances	2	C
-	VOCO	Overhead cost variance	1	C
-	VOUS	Overhead efficiency variance	1	C
-	VO**	Overhead variances	2	C
-	VRCO	Run labor cost variance	1	C

F1=Help F3=Exit F5=Refresh F7=Backward
F8=Forward

11/003

1902 - Session successfully started

Start 2 Microsoft Outlook Power Point Present... Microsoft PowerPoint... ESERVER 6 javaw 5:49 PM



Variance Transactions

ESERVER

File Edit View Communication Actions Window Help

AMVLI01 Maintain Interface Control File

Position to transaction type ____

Type option; then press Enter.
2=Change

Option	Type	Description	Interface Code	More: - Application Indicator
_	VRCO	Run labor cost variance	1	C
_	VRUS	Run labor efficiency variance	1	C
_	VR**	Run variances	2	C
_	VSCO	Setup labor cost variance	1	C
_	VSUS	Setup labor efficiency variance	1	C
_	VS**	Setup variances	2	C
_	V***	Variances - all	2	C

F1=Help F3=Exit F5=Refresh F7=Backward
F8=Forward

11/003

I902 - Session successfully started

Start 2 Microsoft Outlook Power Point Present... Microsoft PowerPoint... ESERVER 6 javaw 5:49 PM

Order Closeout

- Order Close & Purge is when XA calculates and collects variance information for the MO
- Normal Close or Force Closing the order will produce the same variances – the only difference is the status of the MO when closed
- Order Close & Purge can produce the Accounting Detail report & Order Closeout Variance Analysis report

MO Accounting Report

* * OVERHEAD CALCULATIONS INCLUDE MACHINE COSTS * *

PAGE IN ORDER 1

ORDER NUMBER	FINISHED ITEM NUMBER	WH	ST DEPT CD PLANN	JOB NUMBER REFERENCE	IAC OAC	ORDER QUANTITY	* - - Q U A N T I T Y - - *	SCHED HRS REMAINING	DATES
M020620	2640070900	1	55	1600		5,000.000	SPLITS/COMPLETED OPEN	250.000-.00	START 4/25/06
							5,250.000		ACTUAL ST 4/25/06
								PROJECTED COST--	LAST TRANS 4/25/06
							.9711		DUE 4/27/06
								4,855.49	ACTL CMLPT 4/25/06

COMP. ITEM NO./ DESCRIPTION	WH	U/ /M	QUANTITY TO-DATE	UNIT COST	STANDARD COST	COST THIS PERIOD	COST TOTAL TO-DATE	DATE LAST ISSUE
054050300	1	EA	5250.000	.0433	216.50	.00	227.33	4/25/06
203110	1	EA	5250.000	.0224	112.13	.00	117.73	4/25/06
264004	1	EA	5250.000	.0413	206.40	.00	216.72	4/25/06
264006	1	EA	5250.000	.7837	3918.57	.00	4114.49	4/25/06
TOTAL STANDARD COST					4,453.60	TO-DATE COST	4,676.27	

OPERATION NO./ DESCRIPTION	STD MS FAC	ACTUAL FAC	PROC SHSET	TOOL PFAC	TBC ST RWK	START DATE	DUE DATE	LAST ACTIVE	* - - Q U A N T I T Y - - *	* - - C O S T P E R U N I T - - *	COST ACT/ST
0010	746A	746A			40 4 0	4/25/06	4/25/06	4/25/06	5,250.000	.08	75
									5,250.000	.06	

Automatic Assembly

	* - - - - STANDARD HOURS/COST	* - - - - THIS PERIOD HOURS/COST	* - - - - TOTAL TO-DATE HOURS/COST	VARIANCE	HOURS	* - - - - CUMULATIVE STD COST/ACT COST	* - - - - CUMULATIVE STD UNIT COST
SET	.00	.00	.00	.00	.00	.00	.0000
LAB	5.49	5.00	5.00	.49	.49	.00	.0134
OVH	321.42	292.50	292.50			.00	.0643
OUT OP	.00	.00	.00	.00	.00	.00	.0000
TOT	5.49	5.00	5.00	.49	.49	.00	.0777
MAC	5.49	.00	.00	.00	5.49	.00	.8907

0020	744P	744P			40 4 0	4/25/06	4/25/06	4/25/06	5,250.000	.00	0
									5,250.000	.07	

Pack 4 Trays in Tote

	* - - - - STANDARD HOURS/COST	* - - - - THIS PERIOD HOURS/COST	* - - - - TOTAL TO-DATE HOURS/COST	VARIANCE	HOURS	* - - - - CUMULATIVE STD COST/ACT COST	* - - - - CUMULATIVE STD UNIT COST
SET	.00	.00	.00	.00	.00	.00	.0000
LAB	.19	5.50	5.50	5.31	5.31	.00	.0140
OVH	2.75	77.61	77.61			.00	.0664
OUT OP	.00	.00	.00	.00	.00	.00	.0000
TOT	.19	5.50	5.50	5.31	5.31	.00	.0804
MAC	13.49	380.83	380.83	.00	.19	.00	.8907

W AM-5512 NO MISC CHARGES FOR THIS ORDER

DIRECT ORDER COSTS	SETUP	LABOR	OVERHEAD	MATL & PUR	MISCELLANEOUS	TOTAL ACTUAL	RECEIPT	DIFFERENCE
	.00	138.51	595.72	4676.27	.00	5410.50	5098.26	312.24

MO Summary Info

Material Detail

Operation Detail

MO Total (Incl Variance)

Variiances

- GL Interfaces break the variiances down into Cost, Efficiency & Usage variiances for each of the following categories:
 - Material
 - Set up Labor
 - Run Labor
 - Overhead (includes Machine Variiances)
 - Miscellaneous Charges

Rules

- *Charge:* Appropriate Variance Account or Cost of Goods Sold
- *Offset:* WIP
- Wildcard Rules (transaction codes that include *) will allow 1 rule to assign accounts to multiple transactions

Variance Transactions

ESERVER
File Edit View Communication Actions Window Help

AMVLI01 Maintain Interface Control File

Position to transaction type ____

Type option; then press Enter.
2=Change

Option	Type	Description	Interface Code	More: - Application Indicator
-	VRCO	Run labor cost variance	1	C
-	VRUS	Run labor efficiency variance	1	C
-	VR**	Run variances	2	C
-	VSCO	Setup labor cost variance	1	C
-	VSUS	Setup labor efficiency variance	1	C
-	VS**	Setup variances	2	C
-	V***	Variances - all	2	C

F1=Help F3=Exit F5=Refresh F7=Backward
F8=Forward

11/003

Start 2 Microsoft Outlook Power Point Present... Microsoft PowerPoint... ESERVER 6 javaw 5:49 PM

One Rule for V*** will assign accounts To all variance transactions

MO Variance Report – pg. 1

SBII ALLAVISTA NO. 01 ORDER CLOSEOUT VARIANCE ANALYSIS DATE 4/25/06 TIME 12.57.51 PAGE 1 AMVGO
 OPER CJS

ORDER NUMBER M020620
 ORDER ACTUAL COST ORDER STANDARD COST ORDER VARIANCE USAGE VARIANCE COST VARIANCE

MATERIAL VARIANCE DETAIL

ITEM	WHS	QUANTITY PER UNIT	QUANTITY RECEIVED	ISSUE QUANTITY	STANDARD COST	EXTENDED COST	ORDER VARIANCE	USAGE VARIANCE	COST VARIANCE
054050300	1	1.0000000	5250.000	5250.000	.04	227.33	.00	.00	.00
205310	1	1.0000000	5250.000	5250.000	.02	117.73	.00	.00	.00
264004	1	1.0000000	5250.000	5250.000	.04	216.72	.00	.00	.00
264006	1	1.0000000	5250.000	5250.000	.78	4114.49	.00	.00	.00

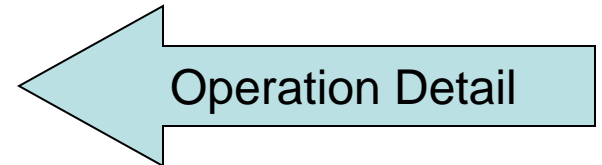
PRODUCTION FACILITY 744P DETAIL

OPER SEQUENCE 0020

SETUP LABOR HOURS	.00	.00							
STANDARD SETUP RATE	.000	.000							
SETUP LABOR EXTENDED COST	.00	.00	.00	.00	.00				
UNIT RUN LABOR HOURS		.0000							
QUANTITY COMPLETE		5250.000							
RUN LABOR HOURS	5.50	.20							
STANDARD RUN LABOR RATE	14.110	14.110							
RUN LABOR EXTENDED COST	77.61	2.89	74.72	74.72	.00				
OVERHEAD EXTENDED COST	303.22	11.29	291.93	291.91	.02				
OUTSIDE OPERATION COST	.00	.00	.00	.00	.00				

Order Variance =

Usage Variance + Cost Variance



MO Variances – Pg 2

ORDER NUMBER M020620
 ORDER ACTUAL COST ORDER STANDARD COST ORDER VARIANCE USAGE VARIANCE COST VARIANCE

PRODUCTION FACILITY 744P DETAIL

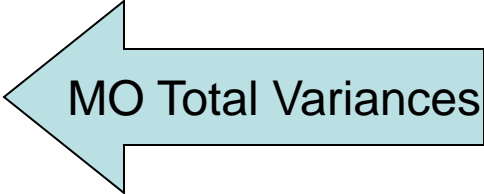
OPER SEQUENCE 0010

PRODUCTION FACILITY 746A DETAIL

OPER SEQUENCE 0010

SETUP LABOR HOURS	.00	.00			
STANDARD SETUP RATE	.000	.000			
SETUP LABOR EXTENDED COST	.00	.00	.00	.00	.00
UNIT RUN LABOR HOURS		.0011			
QUANTITY COMPLETE		5250.000			
RUN LABOR HOURS	5.00	5.76			
STANDARD RUN LABOR RATE	12.180	12.180			
RUN LABOR EXTENDED COST	60.90	70.27	9.37-	9.37-	.00
OVERHEAD EXTENDED COST	292.50	337.51	45.01-	45.01-	.00
OUTSIDE OPERATION COST	.00	.00	.00	.00	.00

	ORDER NUMBER M020620				
	ORDER	ORDER	ORDER	USAGE	COST
	ACTUAL COST	STANDARD COST	VARIANCE	VARIANCE	VARIANCE
COSTS:					
MATERIAL	4676.27	4676.27	.00	.00	.00
SETUP	.00	.00	.00	.00	.00
LABOR	138.51	73.16	65.35	65.35	.00
OVERHEAD	595.72	348.80	246.92	246.90	.02
MISCELLANEOUS	.00	.00	.00	.00	.00
TOTAL COSTS	5410.50	5098.23	312.27	312.25	.02
RECEIPT AMOUNT	5098.26				
COST LESS RECEIPT AMOUNT	312.24				
LESS:					
USAGE VARIANCES	312.25				
COST VARIANCES	.02				
ORDER CLOSEOUT VARIANCE	.03-				



MO Accounting Report

* * OVERHEAD CALCULATIONS INCLUDE MACHINE COSTS * *

PAGE IN ORDER 1

ORDER NUMBER	FINISHED ITEM NUMBER	WH	ST DEPT CD PLANN	JOB NUMBER REFERENCE	IAC OAC	ORDER QUANTITY	* - - Q U A N T I T Y - - *	SPLITS/COMPLETED	OPEN	SCHED HRS REMAINING	DATES
M020620	2640070900	1	55	1600		5,000.000		.000	250.000-	.00	START 4/25/06 ACTUAL ST 4/25/06 LAST TRANS 4/25/06 DUE 4/27/06 ACTL CMLPT 4/25/06
ORDER DESCRIPTION-- ASSY COMPLETE T [REDACTED]					UNIT COST--	.9711	PROJECTED COST--	4,855.49			

COMP. ITEM NO./ DESCRIPTION	WH	U/ /M	QUANTITY TO-DATE	UNIT COST	STANDARD COST	COST THIS PERIOD	COST TOTAL TO-DATE	DATE LAST ISSUE
054050300	1	EA	5250.000	.0433	216.50	.00	227.33	4/25/06
[REDACTED] CORE ELECT N/P	1	EA	5250.000	.0224	112.13	.00	117.73	4/25/06
264004 CAP [REDACTED] GREY	1	EA	5250.000	.0413	206.40	.00	216.72	4/25/06
264006 RTPM GROMMET	1	EA	5250.000	.7837	3918.57	.00	4114.49	4/25/06
TMP HOUSING OVERMOLD								
TOTAL STANDARD COST					4,453.60	TO-DATE COST	4,676.27	

OPERATION NO./ DESCRIPTION	STD MS FAC	ACTUAL FAC	PROC SHEET	TOOL PFAC	TBC ST RWK	START DATE	DUE DATE	LAST ACTIVE	* - - QUANTITY - - * PERIOD/ TO-DATE	* - - COST PER UNIT - - * STANDARD/ ACTUAL	COST ACT/ST
0010	746A	746A			40 4 0	4/25/06	4/25/06	4/25/06	5,250.000 5,250.000	.08 .06	75

Automatic Assembly

	* - - - - STANDARD HOURS/COST	* - - - - THIS PERIOD HOURS/COST	* - - - - TOTAL TO-DATE HOURS/COST	VARIANCE HOURS	* - - - - CUMULATIVE STD COST/ACT COST	* - - - - CUMULATIVE QTY SCRAPPED	* - - - - CUMULATIVE STD UNIT COST
SET	.00	.00	.00	.00	.00	.00	.0000
LAB	5.49	5.00	5.00	.49	.00	.00	.0134
OVH	66.93	60.90	60.90		.00	.00	.0643
OUT OP	321.42	292.50	292.50		.00	.00	.0000
TOT	.00	.00	.00	.00	.00	.00	.0000
	5.49	5.00	5.00	.49	.00	.00	.0777
	388.35	353.40	353.40		.00	.00	
MAC	5.49	.00	.00	5.49	.00	.00	.8907
	.00	.00	.00		.00	.00	

0020	744P	744P			40 4 0	4/25/06	4/25/06	4/25/06	5,250.000 5,250.000	.00 .07	0
------	------	------	--	--	--------	---------	---------	---------	------------------------	------------	---

Pack 4 Trays in Tote

	* - - - - STANDARD HOURS/COST	* - - - - THIS PERIOD HOURS/COST	* - - - - TOTAL TO-DATE HOURS/COST	VARIANCE HOURS	* - - - - CUMULATIVE STD COST/ACT COST	* - - - - CUMULATIVE QTY SCRAPPED	* - - - - CUMULATIVE STD UNIT COST
SET	.00	.00	.00	.00	.00	.00	.0000
LAB	.00	5.50	5.50	5.31-	.00	.00	.0140
OVH	2.75	77.61	77.61		.00	.00	.0664
OUT OP	10.74	303.22	303.22		.00	.00	.0000
TOT	.00	.00	.00	.00	.00	.00	.0000
	.00	.00	.00	.00	.00	.00	.0000
	.19	5.50	5.50	5.31-	.00	.00	.0804
MAC	13.49	380.83	380.83	.19	.00	.00	.8907
	.19	.00	.00		.00	.00	
	.00	.00	.00		.00	.00	

W AM-5512 NO MISC CHARGES FOR THIS ORDER

DIRECT ORDER COSTS	SETUP	LABOR	OVERHEAD	MATL & PUR	MISCELLANEOUS	TOTAL ACTUAL	RECEIPT	DIFFERENCE
	.00	138.51	595.72	4676.27	.00	5410.50	5098.26	312.24

MO Summary Info

Material Detail

Operation Detail

MO Totals (incl Variance)

Total Variances

- Final Page of Order Detail report has total variance dollars for all MO's closed and purged

Display Spooled File

File AHCS6RP Page/Line 3/3
Control 6 Columns 1 - 130
Find
*...*1...*2...*3...*4...*5...*6...*7...*8...*9...*0...*1...*2...*3
CISTECH NO. 01 COST TOTAL SHEET DATE 5/14/06 TIME 21.00.29 PAGE 3 AHCS

C O S T S	THIS PERIOD	TOTAL TO DATE	
SETUP	.00	.00	
LABOR	.00	.00	
OVERHEAD	.00	.00	
MATL & PUR	1,212.60	1,212.60	
MISCELLANEOUS	.00	.00	

TOTAL ACTUAL	1,212.60	1,212.60	
MINUS RECEIPTS	1,541.58	1,541.58	

WORK IN PROCESS	328.98-	328.98-	

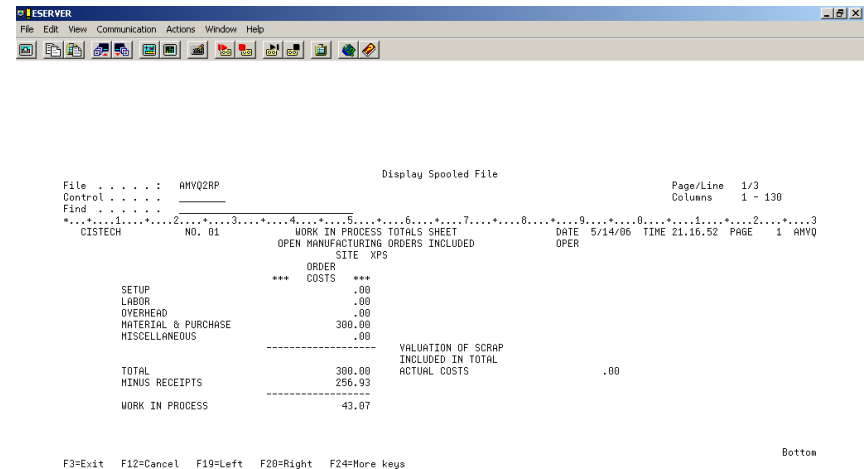
VALUATION OF SCRAP (LABOR & OVERHEAD) INCLUDED IN TOTAL ACTUAL COSTS .00
VALUATION OF SCRAP (MATERIAL & PURCHASED) INCLUDED IN TOTAL ACTUAL COSTS .00

F3=Exit F12=Cancel F19=Left F20=Right F24=More keys Bottom

Total Variances

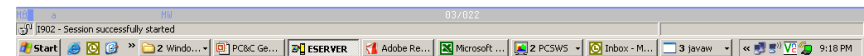
WIP Reconciliation

- After running the MO Close and Purge, you will need to run the WIP Totals Sheet from the PC&C Reports menu to get the value of WIP
- Use this to reconcile to GL WIP value



```
Display Spooled File
File . . . . . : AHVQ2RP                               Page/Line 1/3
Control . . . . :                                         Columns 1 - 130
Find . . . . . :
*.....1.....2.....3.....4.....5.....6.....7.....8.....9.....0.....1.....2.....3
CISTECH NO. 01 WORK IN PROCESS TOTALS SHEET DATE 5/14/06 TIME 21.16.52 PAGE 1 AHVQ
OPEN MANUFACTURING ORDERS INCLUDED OPER
SITE XPS
ORDER COSTS
*** COSTS ***
SETUP .00
LABOR .00
OVERHEAD .00
MATERIAL & PURCHASE 300.00
MISCELLANEOUS .00
----- VALUATION OF SCRAP
TOTAL 300.00 INCLUDED IN TOTAL
MINUS RECEIPTS 256.93 ACTUAL COSTS .00
-----
WORK IN PROCESS 43.07

F3=Exit F12=Cancel F19=Left F20=Right F24=More keys
Bottom
```



Summary

- Use GL Rules to book machine, labor & overhead to WIP
- Costs for Outside Operations are determined by the Outside Operation file
- Scrap costs are pro-rated to the operation where scrap was reported
- Variances are calculated and reported when the MO is closed and purged