



Infor OS

David Foster

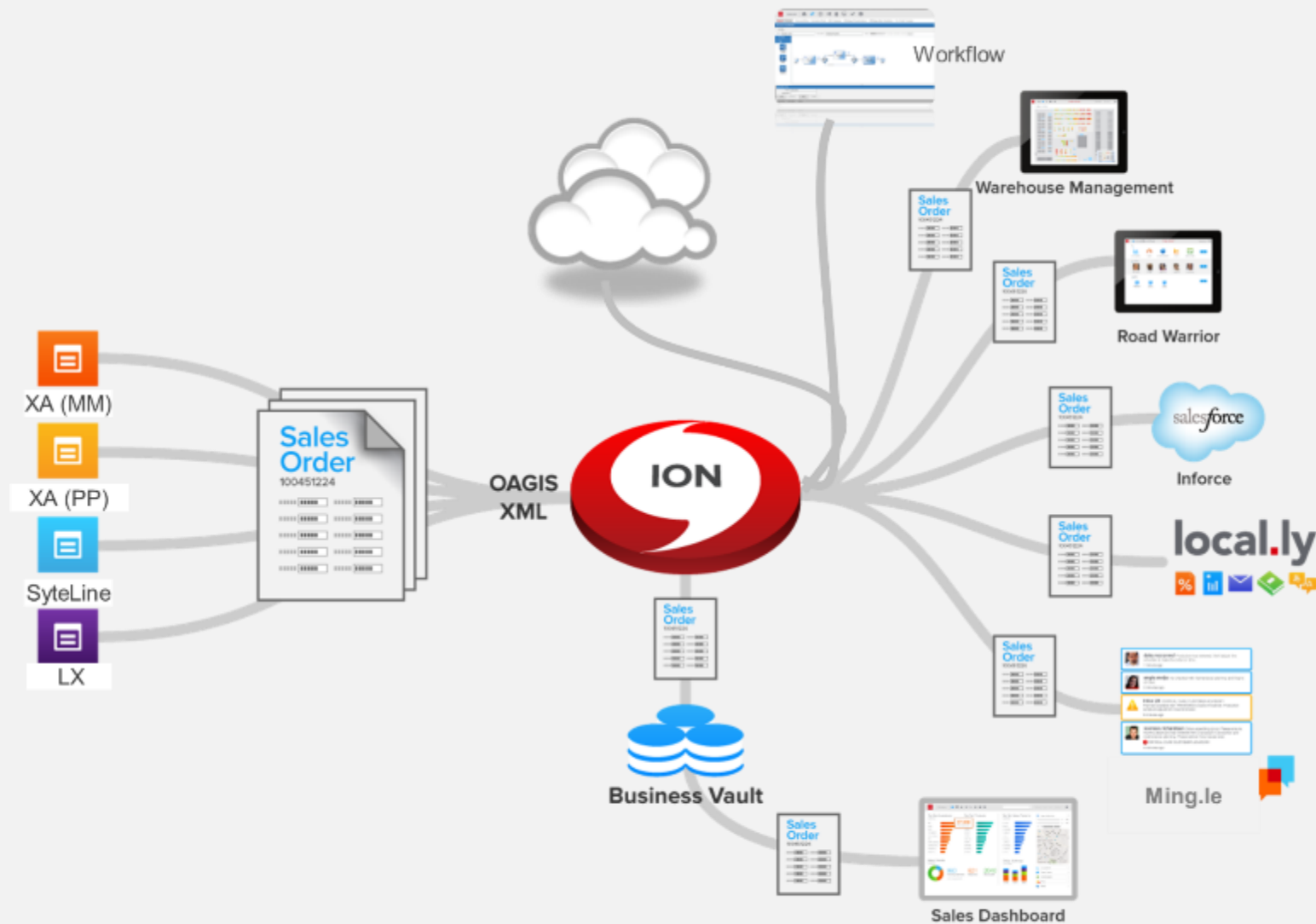
Principal Business Consultant, Infor



Infor Operating Services (OS)

- Infor Standard
- Consistent “Look and Feel”
- Components
 - Ming.Le
 - ION
 - Work Flow
 - Event Manager
 - Business Vault

ION, what does it do?



- Social Collaboration
- System Collaboration
- Connect Infor and non-Infor applications
- Workflow Control
- Business Vault Development
- Cloud interface
- Single sign-on for all functions
- Event Management & Notifications
- ...



Ming.Le

Infor **Ming.le** fundamentally changes the way work is done

Social business? *Essential* business.

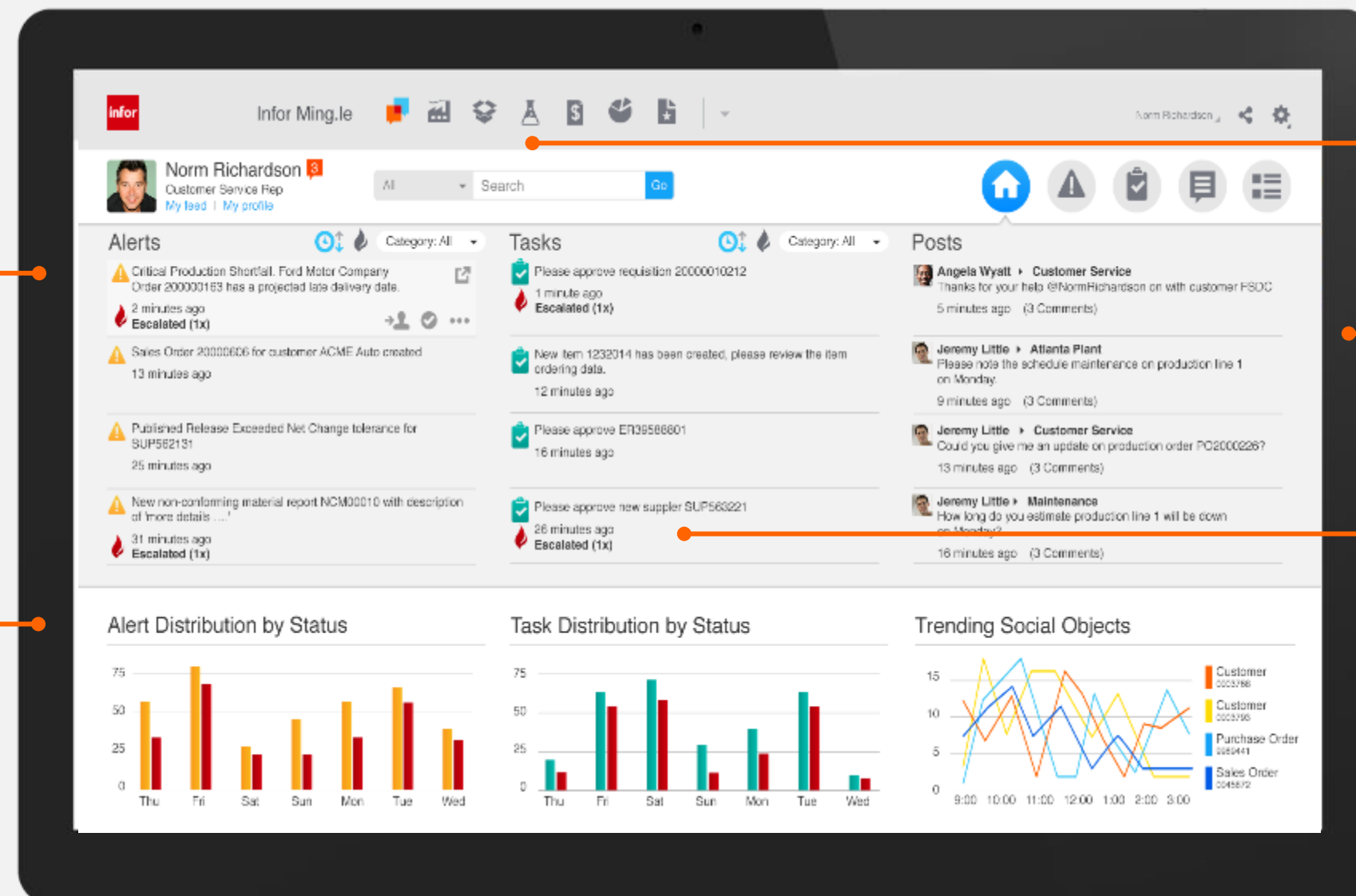
Stay connected with real-time alerts

In-context analytics deliver key indicators at a glance

Easy access to all systems

Communicate, collaborate and share information with colleagues

Automated tasks let you respond faster





Norm Richardson 3
Customer Service Rep
[My feed](#) | [My profile](#)

All [Go](#)



Alerts

Category: All

- Critical Production Shortfall. Ford Motor Company Order 200000163 has a projected late delivery date.
2 minutes ago
 Escalated (1x)
- Sales Order 20000606 for customer ACME Auto created
13 minutes ago
- Published Release Exceeded Net Change tolerance for SUP562131
25 minutes ago
- New non-conforming material report NCM00010 with description of 'more details'
31 minutes ago
 Escalated (1x)

Tasks

Category: All

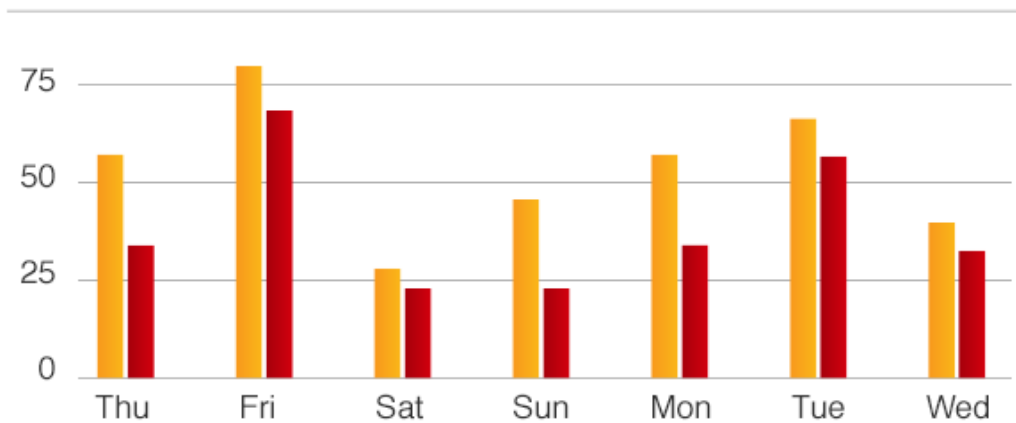
- Please approve requisition 20000010212
1 minute ago
- New item 1232014 has been created, please review the item ordering data.
12 minutes ago
- Please approve ER39588801
16 minutes ago
- Please approve new supplier SUP563221
26 minutes ago
 Escalated (1x)

[Drill to Sales Order](#)

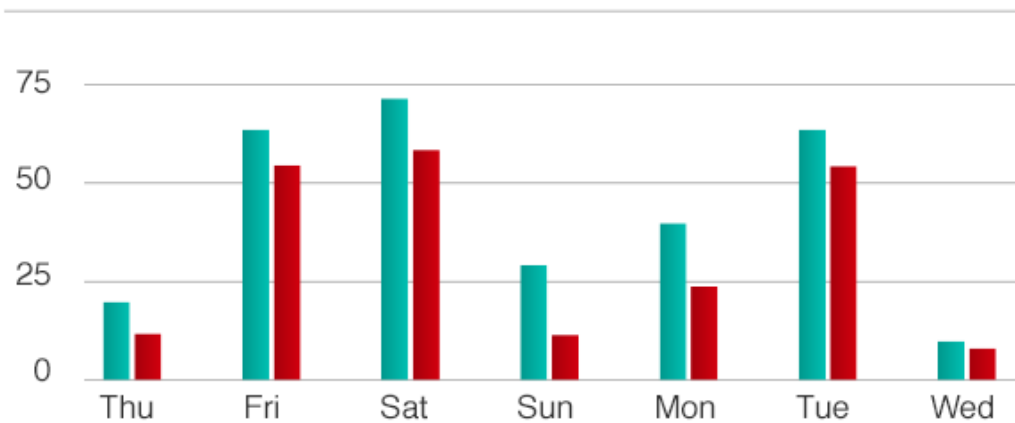
Posts

- Angela Wyatt** ▶ **Customer Service**
Thanks for your help @NormRichardson on with customer FSDC
5 minutes ago (3 Comments)
- Jeremy Little** ▶ **Atlanta Plant**
Please note the schedule maintenance on production line 1 on Monday.
9 minutes ago (3 Comments)
- Jeremy Little** ▶ **Customer Service**
Could you give me an update on production order PO2000226?
13 minutes ago (3 Comments)
- Jeremy Little** ▶ **Maintenance**
How long do you estimate production line 1 will be down on Monday?
16 minutes ago (3 Comments)

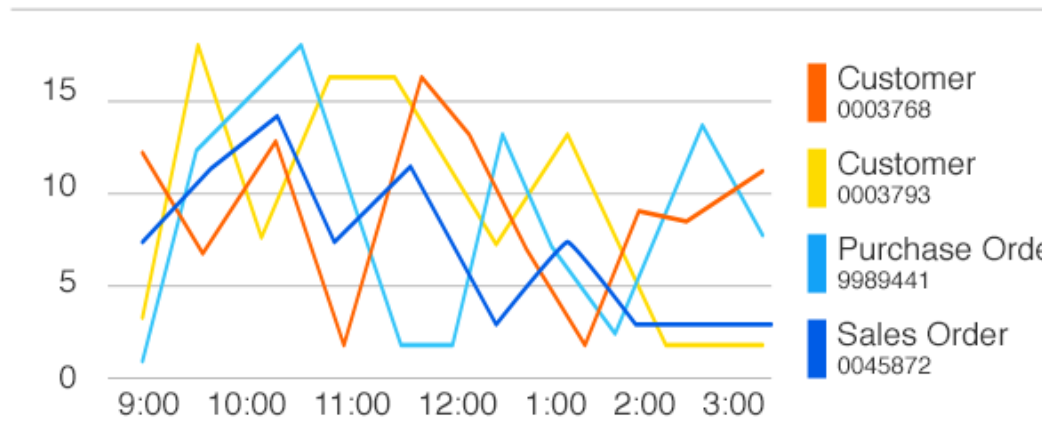
Alert Distribution by Status



Task Distribution by Status



Trending Social Objects





Event Manager

ION Event Management

MONITOR

“events” that happens
within a system

“events” that happens
across a set of
systems

“events” that did not
happen *but* were
supposed to



EXAMPLES

Sales Order Cancellation
Opportunity Lost
Inventory Stockouts




Order from ERP & fulfillment
in WMS Inventory not
available

Order from ERP & shipment
confirmation never occurred
out of WMS



ION Workflow

ION Workflow

WHAT	Authorizations	Work Distribution	Suite Workflow
			
EXAMPLES	Approve PO Sign-Off new Item	Enter a new Item Enter new Customer Review Budget	Requisition approval for EAM and if approved process in ERP

Workflow Modeler



Name: SUN_EMEA_GF_JournalAuth

Description: Basic Journal Authorization

Tenant: ☒ infor

☐ Changed since last activation

> Activities

▼ Flow



Decision



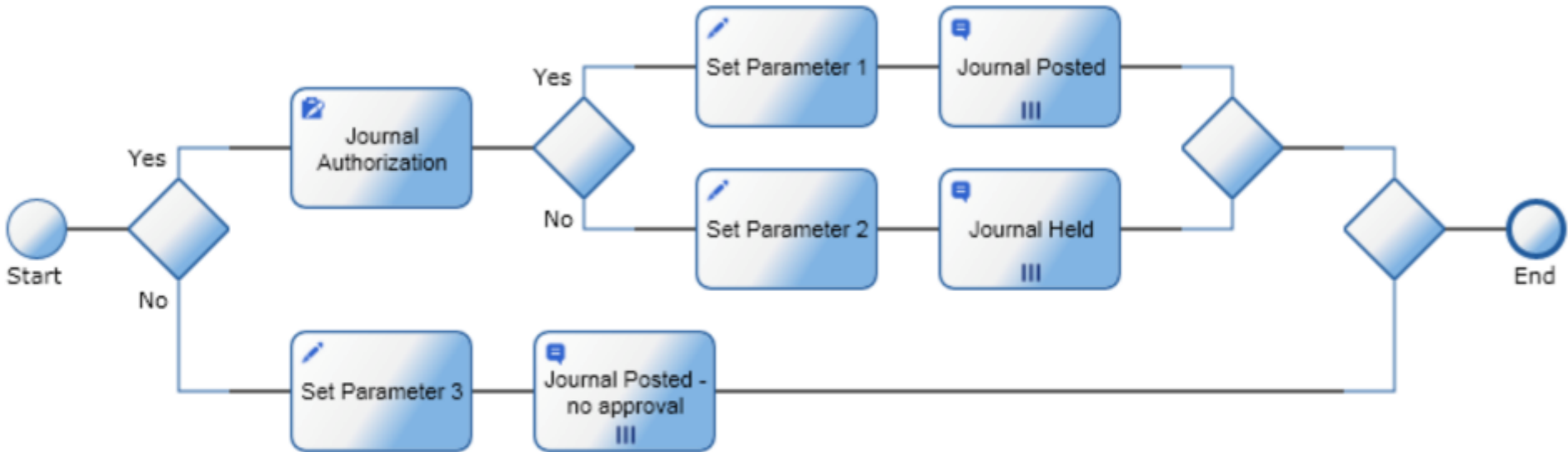
LoopBack



Parallel



Subprocess



ION DESK: WORKFLOW MODELER

Workflow Properties

Parameters

Drill Backs

Add

Edit

Remove

Name ▲	Type	Code Name	Input	Output	Use Initial Value if Null	Initial Value
Amount	String		<input checked="" type="checkbox"/>	<input type="checkbox"/>	<input type="checkbox"/>	
Authorized	Boolean		<input type="checkbox"/>	<input checked="" type="checkbox"/>	<input type="checkbox"/>	False
Authorizer	String		<input type="checkbox"/>	<input checked="" type="checkbox"/>	<input type="checkbox"/>	
Comment	String		<input type="checkbox"/>	<input checked="" type="checkbox"/>	<input type="checkbox"/>	

Model | Manage | Archive

Workflows | Activation Policies

Workflow Modeler



Name: SUN_NA_PAYMENT_AUTH

Description: Sun Payment Authorization Workflow (NA)

Tenant: ☒ infor☐ Changed since last activation

Activities

Flow



Decision



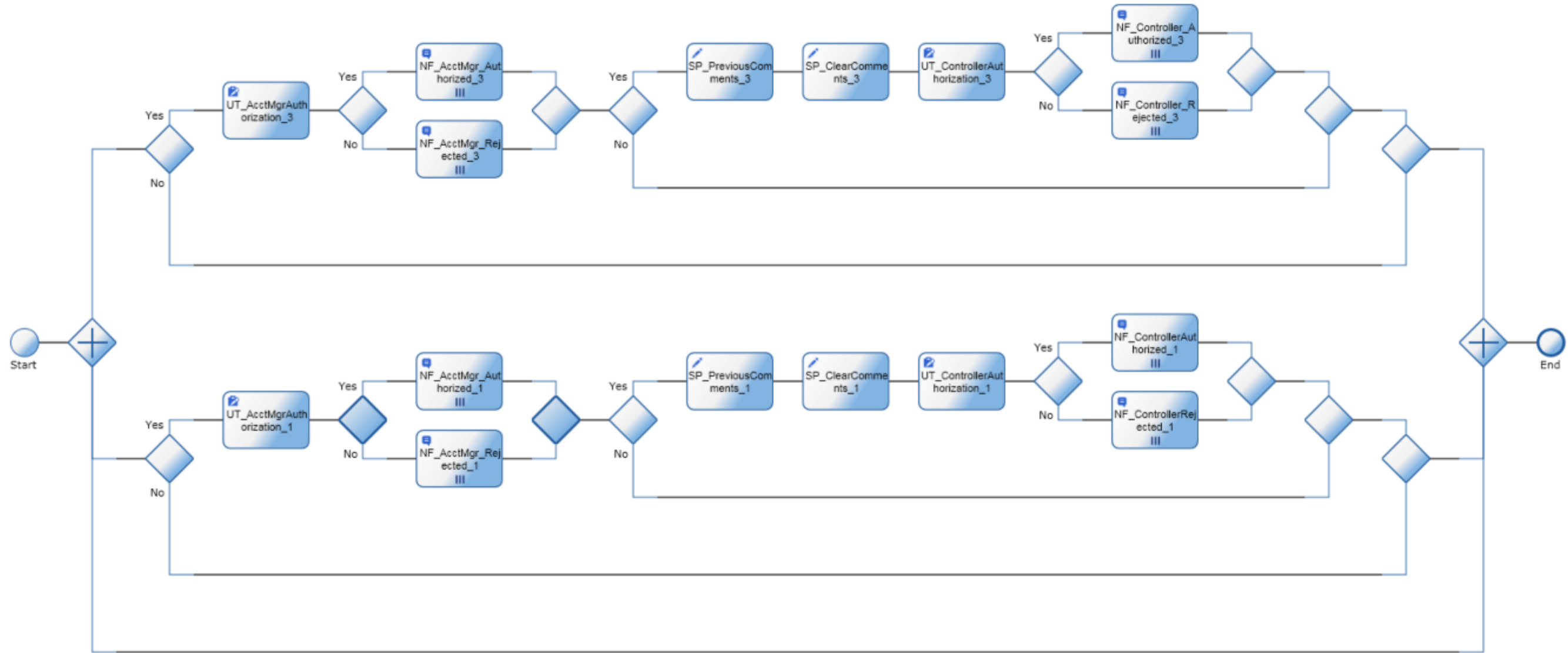
LoopBack



Parallel



Subprocess



Decision Properties

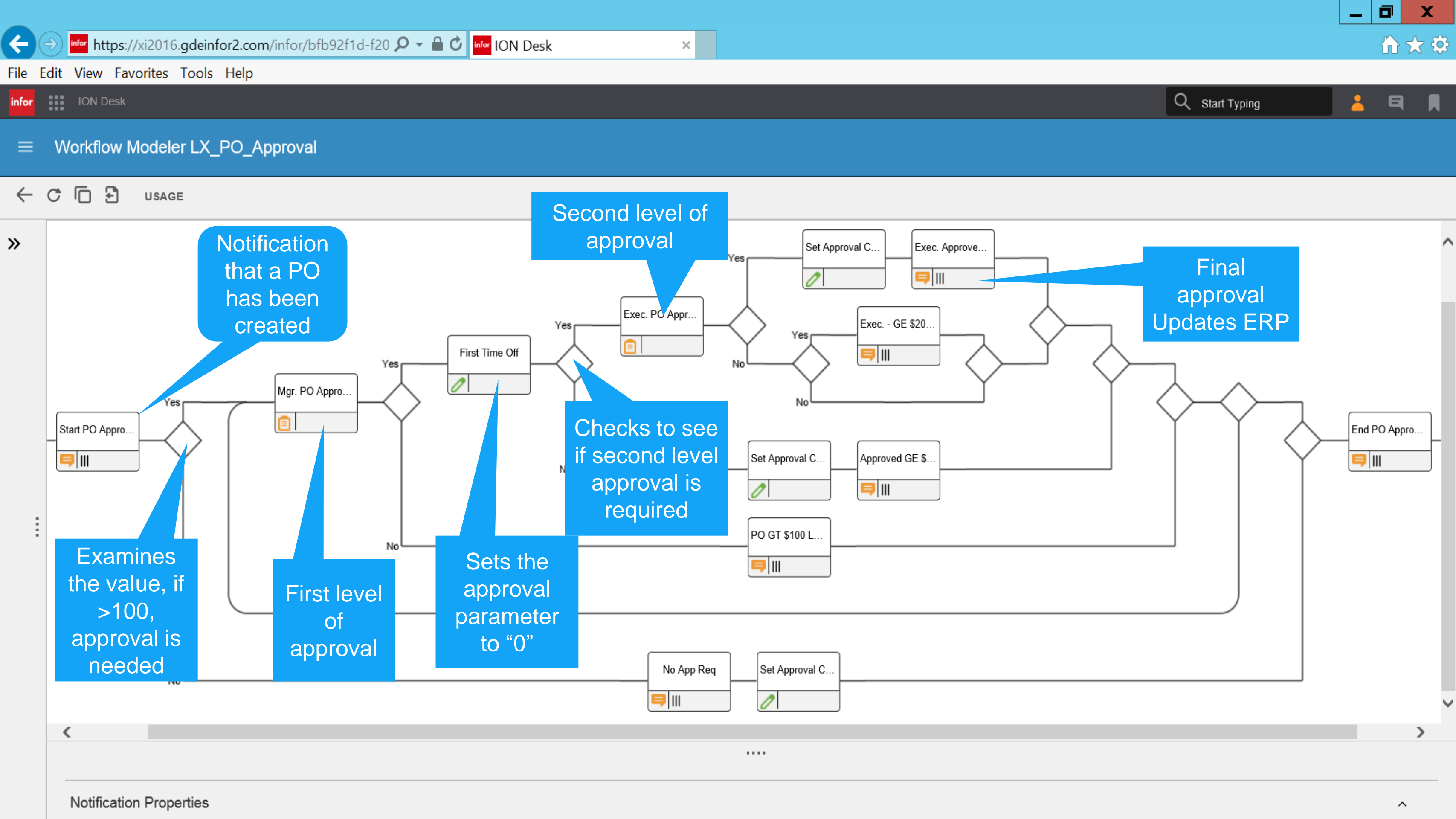
Used Condition: Authorized

Name	Expression
Authorized	[MedFlag] = 'yes'

ION DESK: FINANCIAL WORKFLOW



PO Approval Example



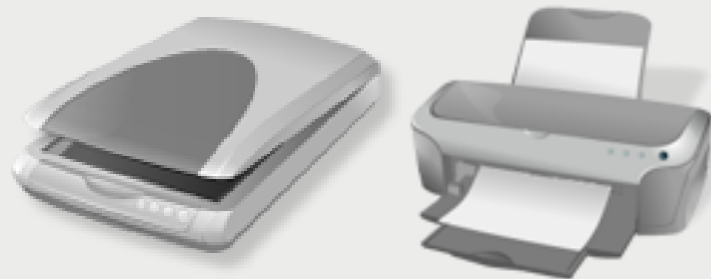
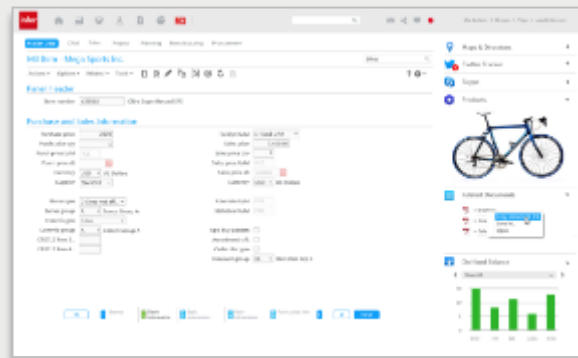


Infor Document Management



Infor Document Management

Input

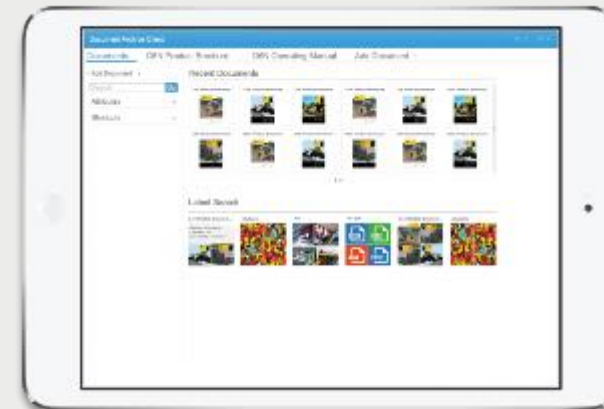
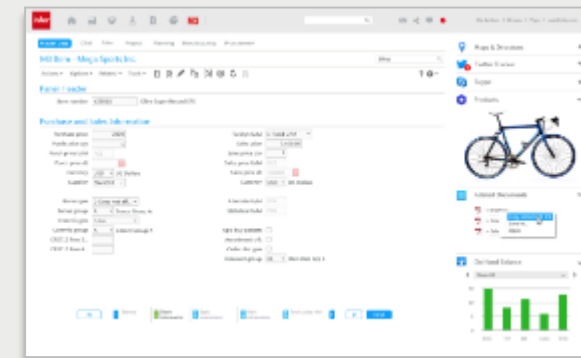


Store

IBM DB2
CM

Microsoft
SharePoint

Connect





IDM - Input



- Automated
 - Capture business documents into IDM
 - Input documents using API calls
- Manual
 - Manually add documents using IDM clients
 - Manually add documents from adopting applications
 - Add to the back-end directly with office applications
- Metadata
 - Used for referring documents to ERP data
 - Capture metadata from business documents
- Archive
 - Archive printed documents

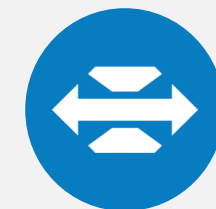




IDM - Store



- Secure
 - Role based authentication in IDM server
 - Authorization enforced by back-end platform
- Versioning
 - Set up and enforced by back-end platform
- Check out/-in
 - As supported by back-end platform
 - IDM clients support check in/-out
 - IDM api's support check in/-out
- Scalable
 - Both back-end platforms scale well
 - IBM DB2 Content Manager is the Enterprise Edition





IDM - Connect

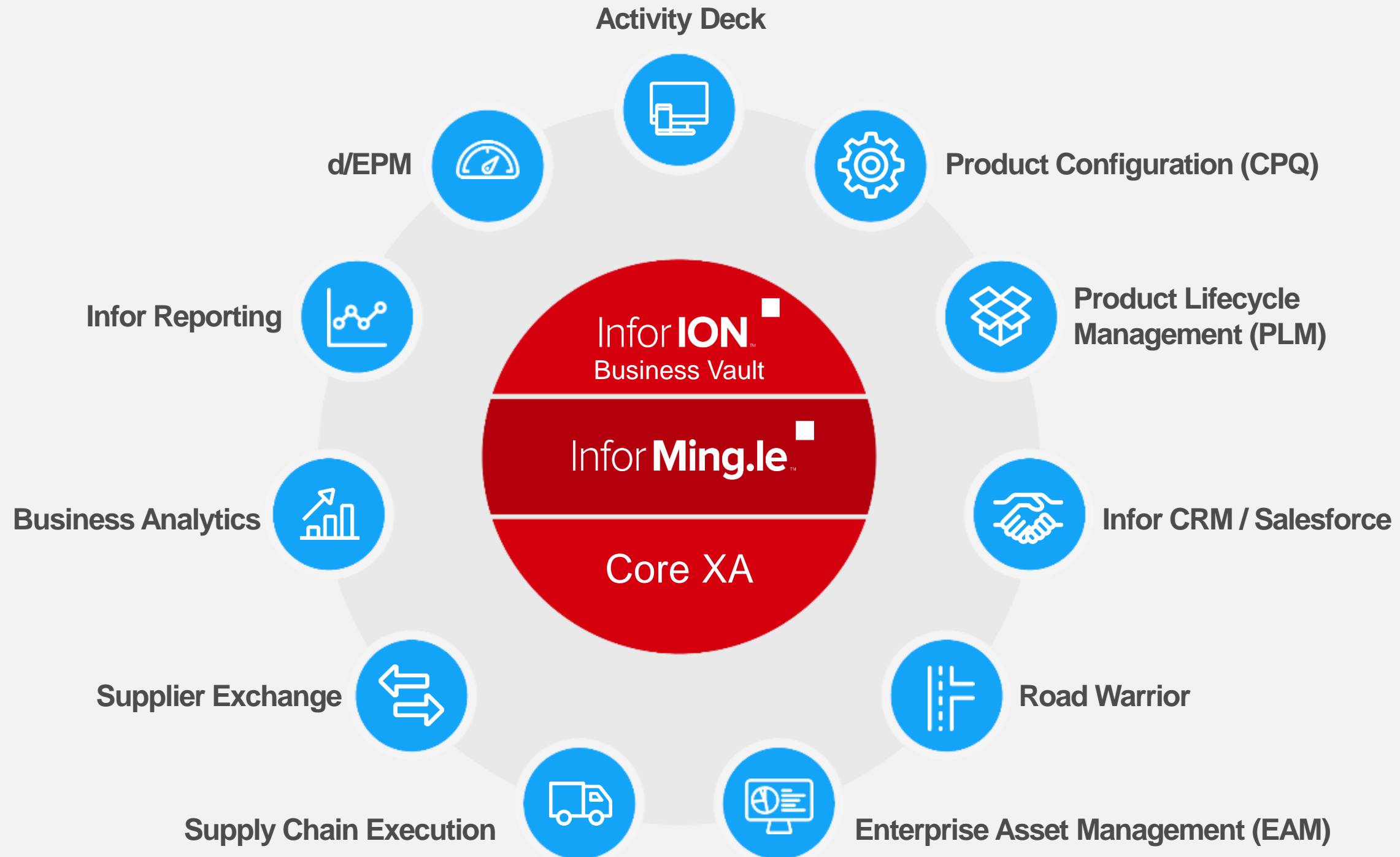


- In context
 - Loose links to documents using metadata
 - Ming.le context messages used for executing links
- Search
 - Free-text search (in content only in IBM DB2 CM)
 - Attribute search
 - All search supported both from clients and in API's
- Manage
 - Edit attributes in IDM clients
 - Edit documents in MS Office applications
 - Manage versions in both
- Collaborate
 - Work on documents in workflows
 - Use documents as content in social applications





Extended Suite + ION + Ming.le





Demonstration



